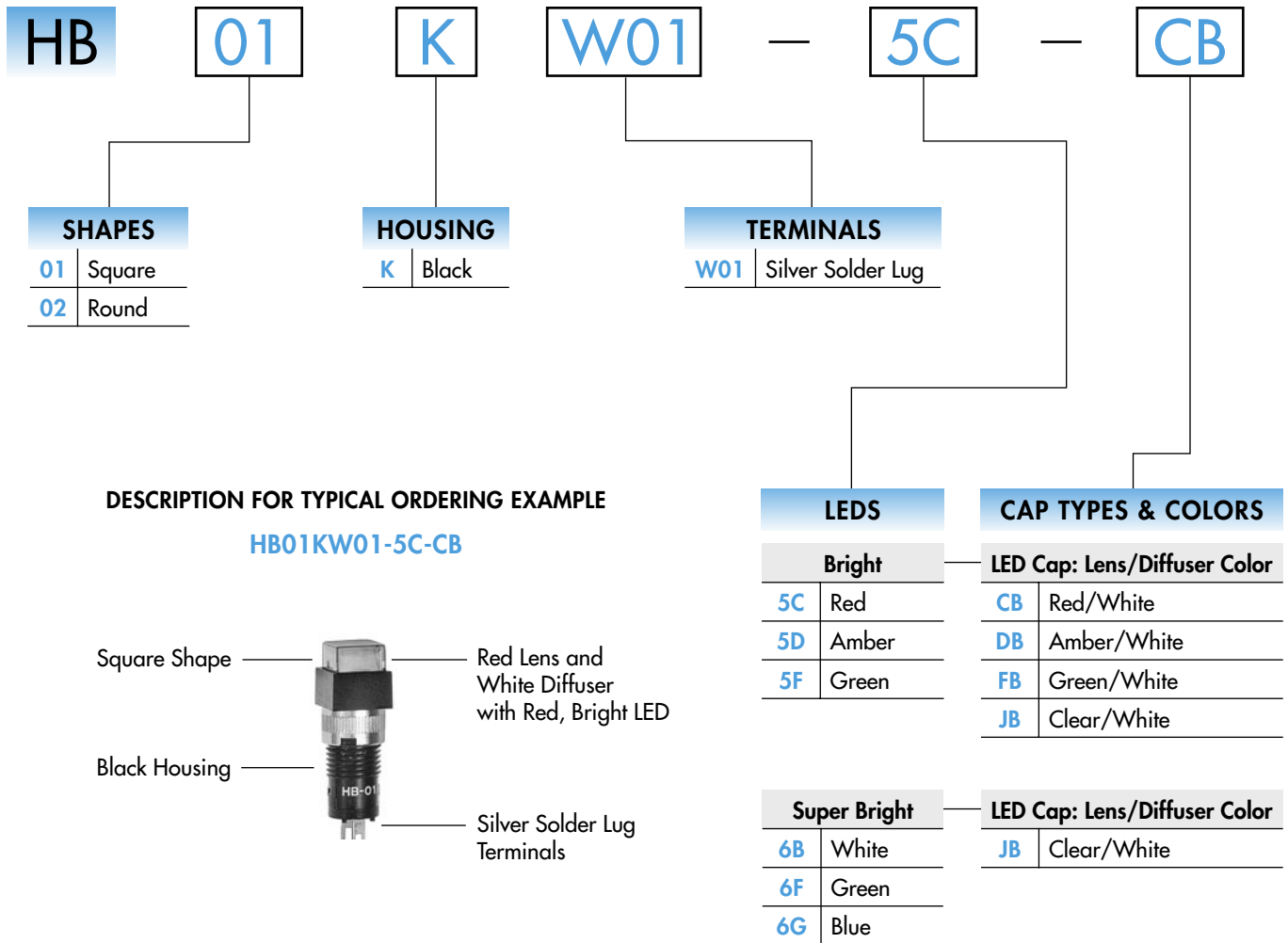


### TYPICAL INDICATOR ORDERING EXAMPLE



### LED COLORS & SPECIFICATIONS

The electrical specifications shown are determined at a basic temperature of 25°C.  
LED circuit is isolated and requires external power source. Single element LED is colored in OFF state.  
If the source voltage exceeds the rated voltage, a ballast resistor is required.  
The resistor value can be calculated by using the formula in the Supplement section.

Bright AT633	Super Bright	Note for Super Bright:	Color	Bright			Super Bright			Unit	
				5C	5D	5F	6B	6F	6G		
		(+) ⊕ (-)		Red	Amber	Green	White	Green	Blue		
			Forward Peak Current	$I_{FM}$	30	30	25	30	30	30	mA
			Continuous Forward Current	$I_F$	20	20	20	20	20	20	mA
			Forward Voltage	$V_F$	1.85	2.0	2.2	3.6	3.5	3.6	V
			Reverse Peak Voltage	$V_{RM}$	5	5	5	5	5	5	V
			Current Reduction Rate Above 25°C	$\Delta I_F$	0.40	0.42	0.38	0.50	0.50	0.50	mA/°C
			Ambient Temperature Range		-25° ~ +50°C			-25° ~ +50°C			

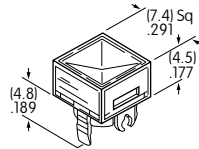
### CAP TYPES & COLORS

#### Colored Cap for Bright LEDs

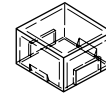
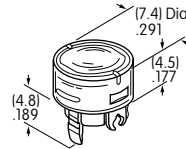
Lens/Diffuser  
Colors Available:

- CB** Red/White
- DB** Amber/White
- FB** Green/White

**AT4168**  
Square



**AT4169**  
Round



Transparent Colored Lens



Translucent White Diffuser



Colored LED AT633

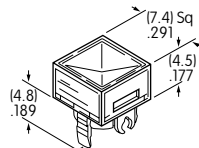
Material: Polycarbonate Finish: Glossy

#### White Cap for Bright & Super Bright LEDs

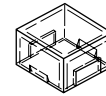
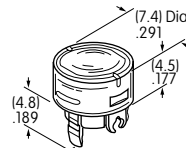
**JB** Clear Lens/  
White Diffuser

Material: Polycarbonate  
Finish: Glossy

**AT4033**  
Square



**AT4034**  
Round



Transparent Clear Lens



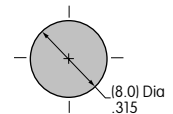
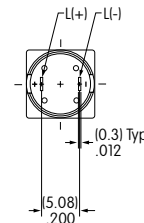
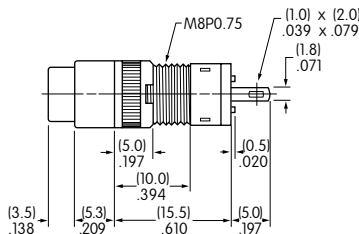
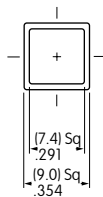
Translucent White Diffuser



Colored LEDs  
AT624, AT629,  
AT630, or AT633

### TYPICAL INDICATOR DIMENSIONS

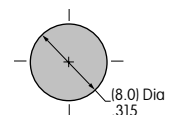
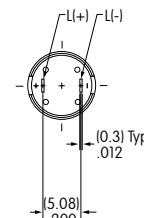
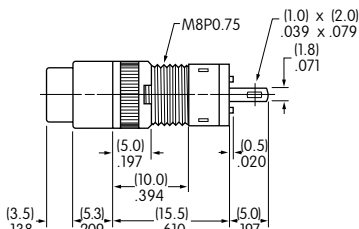
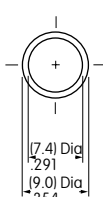
#### Square



Recommended Panel  
Thickness: .020" ~ .197"  
(0.5 ~ 5.0mm)

HB01KW01-5C-CB

#### Round



Recommended Panel  
Thickness: .020" ~ .197"  
(0.5 ~ 5.0mm)

HB02KW01-5C-CB